

CERTIFICATE OF LOCATION OF GOVERNMENT CORNER

South Quarter _____ Corner of Section 33 , Township 106 , Range 39W , 5th P.M.

STATE OF MINNESOTA, County of Murray

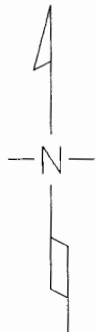
At the corner location shown on the sketch

On Apr. 21, 2004 found a 12" Stone 2.5' Deep

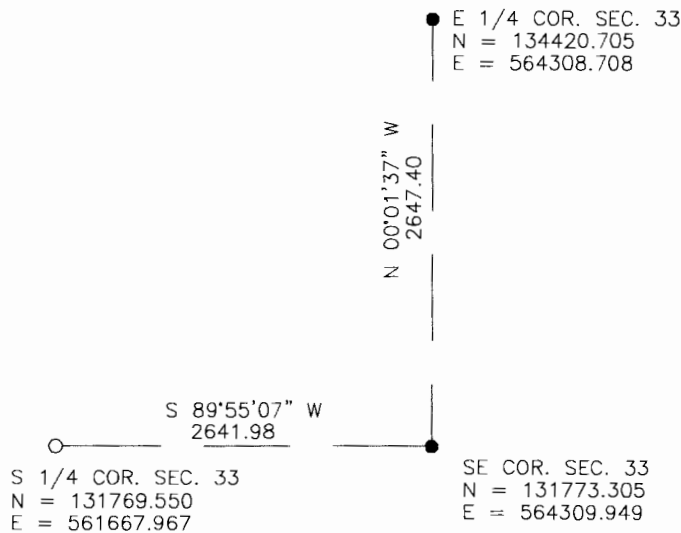
left monument as found lowered monument, removed monument (explain)

On May 5, 2004 placed a 1" Iron Pipe with Survey Cap 23008 directly over top center of stone

SKETCH OF REFERENCE TIES



PROJECT COORDINATES



Statement of evidence relative to this corner location is on back of page.

I hereby certify that this document and the data contained herein was prepared by me or under my direct supervision.

Perry L. Zieske
SIGNATURE

5-13-04
DATE

MN. REGISTRATION NO. 23008

Land Surveyor, Professional Engineer

County Surveyor, County Engineer

OFFICE OF THE COUNTY RECORDER

I hereby certify that this document was filed in the Co. Recorder's Office at MAY 14 2004 on the _____ day of _____

County Recorder _____

By _____, Deputy

DOCUMENT NO. _____